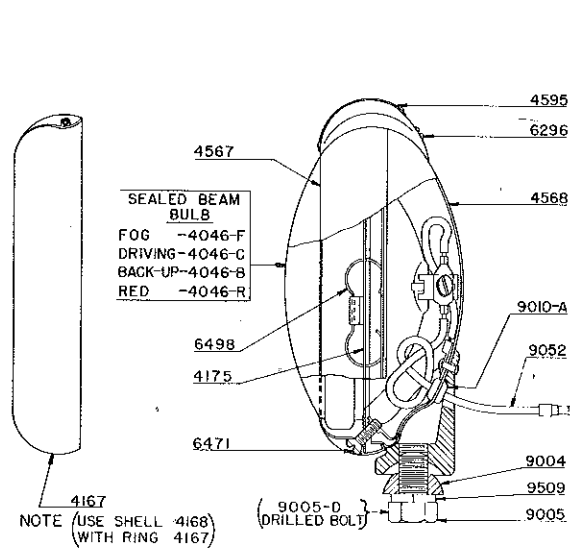


# Bumper & Pan Mounting Fog, Driving, Back-Up Lights

**MODEL H1**  
SHOWN BELOW  
**STOCK NO. 420**

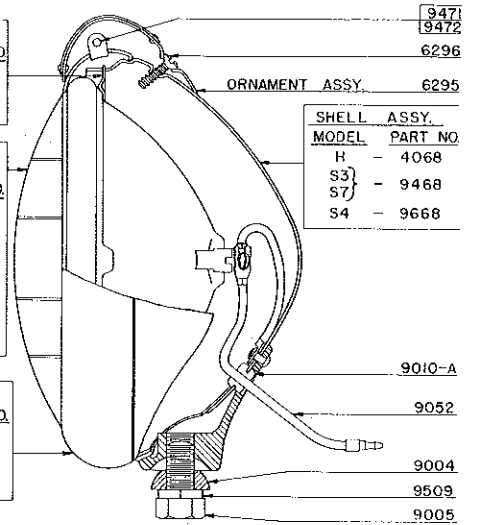
**MODELS H, S3, S4, S7**  
SHOWN BELOW  
**STOCK NOS. 300-400-420-430**



ADAPTER RING	
MODEL	PART NO.
H	- 4075
S3 S4 S7	- 9675

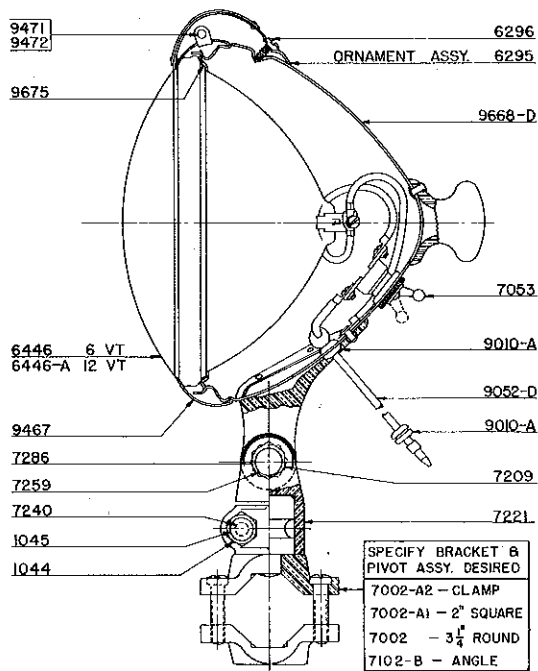
SEALED BEAM BULB	
MODEL	PART NO.
H-FOG	- 4046-A
H-DRIVING	-4046-C
H-BACK-UP	-4046-B
H-RED	- 4046-R
S3 FOG	- 9646-F
S4 DRIVING	-9646-C
S7 RED	- 9646-R

RING ASSY.	
MODEL	PART NO.
H	- 4067
S3 S4 S7	- 9467

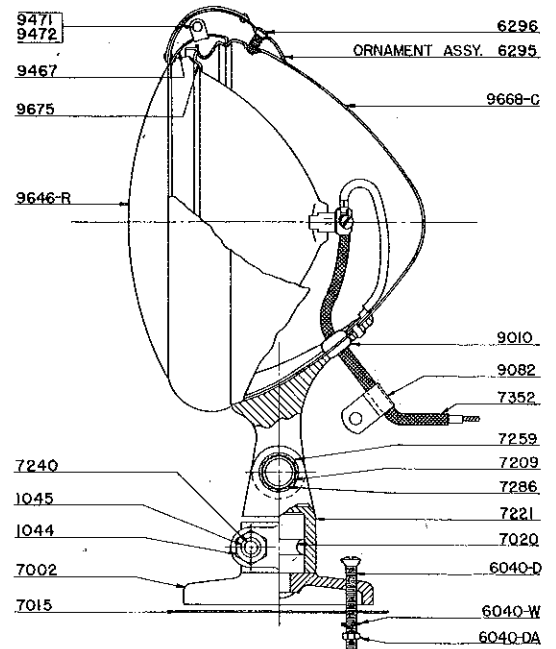


SEALED BEAM ASSEMBLY SHOWN ABOVE  
MODELS PRECEDING SEALED BEAM TYPE ARE SAME AS ABOVE  
EXCEPT FOR SEPARATE LENS, REFLECTOR, GASKET, BULB ASSEMBLY.  
SEE PAGE 3 FOR GASKETS-BULBS-LENSES.  
WHERE NECESSARY HAVE REFLECTOR RESILVERED LOCALLY

## "AG" Sealed Beam Deck Light



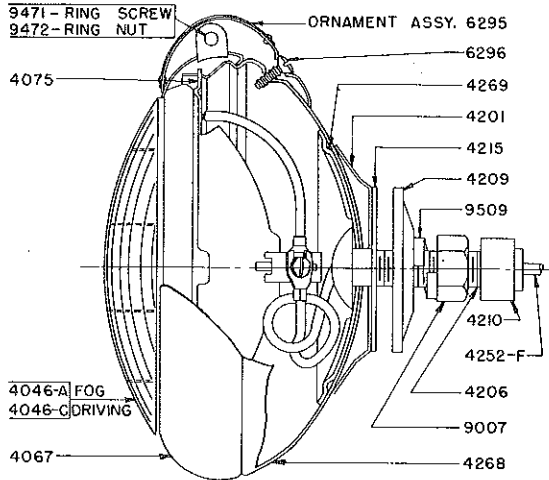
## No. 3 Universal Warning Light



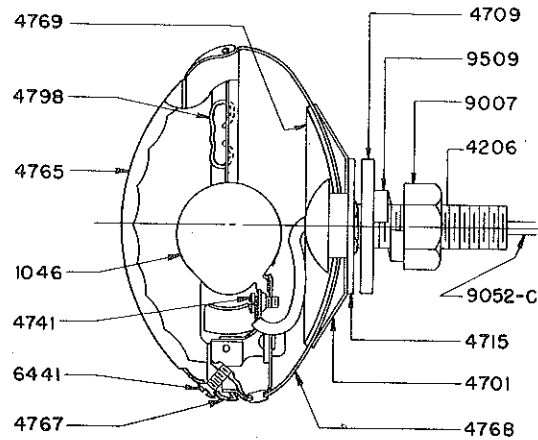
**UNITY MANUFACTURING CO., 2909 Indiana Ave., CHICAGO 16, ILL.**

# Flush Mounting Fog and Back-Up Lights

**Model "H-2" Fog Light**  
STOCK NO. 425



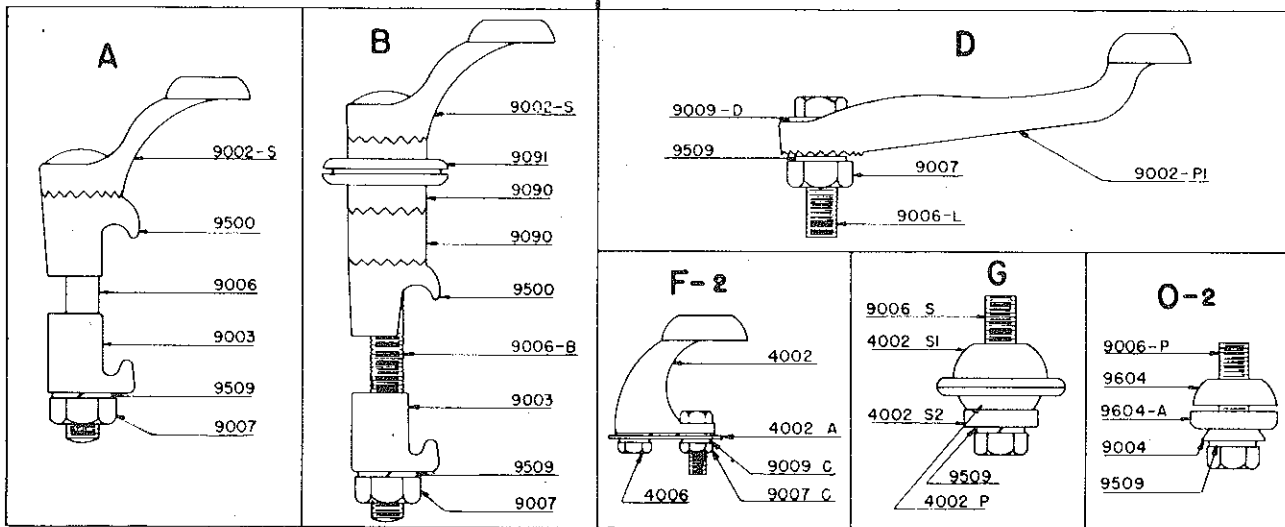
**Model "B" Back-Up Light**  
STOCK NO. 435



## Fog Light Brackets

**Universal Bumper  
Arm Brackets**

**Universal Apron  
Mounting Brackets**



List Price for any single Fog Light Bracket is \$1.38 each. See Form No. 168 for Bracket Specifications by makes of vehicles.

All Prices herein are U. S. Prices and are subject to change without notice.

EFFECTIVE JULY 15, 1949

PARTS PRICES (U.S.A.) PLEASE ORDER BY PART NUMBER  
WHENEVER POSSIBLE, PLEASE ORDER IN STANDARD PACKAGE MULTIPLES.

PRICES SUBJECT TO CHANGE WITHOUT NOTICE

†—One Dagger before Parts Number indicates that such part is packed and labeled ONE TO A  
CARTON.††—Two Daggers before Parts Number indicates that such part is packed and labeled in STAN-  
DARD PACKAGE OF TEN PIECES. Where less than ten of such parts are ordered, they are packed  
in marked paper bags.

Parts with no daggers before them are either individually wrapped or packed in marked paper bag.

N. B.—On Wholesale orders for Parts Only, totalling less than \$3.00 wholesale, a Service Charge of 25¢ will  
be added.Unity Deluxe Model and Super Model Fog Lights are now obsolete. Repair parts are no longer avail-  
able, except Gaskets and Lenses, listed below. Deluxe and Super Models cannot be converted to Sealed  
Beam Type.

## GASKETS

Part No.	Description	List Price
††3070	Synthetic Rubber Gasket, 1/8" thick for Deluxe Model Fog Lights, 19" long, cut to fit light.....	.23
††6370	Synthetic Rubber Gasket, 7/32" x 5/32" for Model S3, S4, S7 Fog Lights, 19 1/2" long, cut to fit light.....	.23

## BULBS Net—No Discount

Bayonet Base type, for single contact Deluxe Model Fog Lights

1046	6-8 Volt, 21 C.P., Bulb No. 1129...	.23
6046	6-8 Volt, 32 C.P., Bulb No. 1133...	.25
6046-A	6-8 Volt, 50 C.P., Bulb No. 1183...	.29
6046-C	12-16 Volt, 32 C.P., Bulb No. 1143	.35
6046-D	12-16 Volt, 50 C.P., Bulb No. 1195	.45

Prefocused type, single contact, for Model S3, S4, S7 &amp; H Fog Lights

9146-A	6-8 Volt, 50 C.P., Bulb No. 1503...	.42
9146-C	12-16 Volt, 32 C.P., Bulb No. 1327	.55
9146-D	12-16 Volt, 50 C.P., Bulb No. 1507	.55

Prefocused type, double contact, for Super Model Fog Lights

9546	6-8 Volt, 32 C.P., Bulb No. 2330...	.41
9546-A	6-8 Volt, 50 C.P., Bulb No. 2530...	.50
9546-C	12-16 Volt, 32 C.P., Bulb No. 2336	.57
9546-D	12-16 Volt, 50 C.P., Bulb No. 2536	.70

Sealed Beam, Type

4046-B	6-8 Volt, 25 Watt, Crystal, for H & H1 B.U. Light—GE No. 4510...	1.50
4046-C	6-8 Volt, 35 Watt, Crystal, for H & H1 Driving—GE No. 4015.....	1.30
4046-F	6-8 Volt, 35 Watt, Amber, for H & H1 Fog—GE No. 4015-A.....	1.50
4046-R	Red 6 Volt, 25 Watt, for H & H1 Lights—GE No. 4510-R.....	2.20
6446	6 Volt, 30 Watt, for AG Deck Lt.	1.65
6446-A	12 Volt, 30 Watt, for AG Deck Lt.	2.10
9446-C	12-16 Volt, 35 Watt, Crystal, for Models S3, 4, 7—GE No. 4412.....	1.75
9446-F	12-16 Volt, 35 Watt, Amber, for Models S3, 4, 7—GE No. 4412-A.....	1.95
9646-C	6-8 Volt, 35 Watt, Crystal, for Models S3, 4, 7—GE No. 4012.....	1.30
9646-F	6-8 Volt, 35 Watt, Amber, for Models S3, 4, 7—GE No. 4012-A.....	1.50
9646-R	Red 6 Volt, 25 Watt, for S3, 4, 7 Lights—GE No. 4013-R.....	1.95

## LENSES

Part No.	Description	List Price
<b>PRISM TYPE</b>		
†4765	Lens for Model B Back-up Light.....	.70
<b>For Models S3, 4 &amp; 7</b>		
†9165	Amber Lens—5 7/8" Diameter.....	1.04
†9165-B	Blue Lens—5 7/8" Diameter.....	1.04
†9165-C	Crystal Lens—5 7/8" Diameter.....	1.04
†9165-G	Green Lens—5 7/8" Diameter.....	1.04
†9165-R	Red Lens—5 7/8" Diameter.....	1.04
†9165-T	Two-tone, Amber & Crystal Lens —5 7/8" Diameter.....	1.04
<b>For Deluxe &amp; Super 6 1/2" Models</b>		
†9065	Amber Lens—6 1/8" Diameter.....	1.04
†9065-B	Blue Lens—6 1/8" Diameter.....	1.04
†9065-C	Crystal Lens—6 1/8" Diameter.....	1.04
†9065-G	Green Lens—6 1/8" Diameter.....	1.04
†9065-R	Red Lens—6 1/8" Diameter.....	1.04
<b>For Super 7" Models</b>		
†9565	Amber Lens—6 3/4" Diameter.....	1.04
†9565-C	Crystal Lens—6 3/4" Diameter.....	1.04
†9565-G	Green Lens—6 3/4" Diameter.....	1.04
†9565-R	Red Lens—6 3/4" Diameter.....	1.04
†9565-T	Two-tone, Amber & Crystal Lens —6 3/4" Diameter.....	1.04

## CLEAR RUBY LENSES

†6061-R	Ruby Lens, for S3, 4 & 7.....	4.00
†6065-R	Ruby Lens, for Deluxe & Super 6 1/2".....	4.00
†9565-RC	Ruby Lens, for Super 7".....	4.00
†9565-RP	Ruby Lens, with "POLICE", for Super 7".....	4.00

## FIRED CERAMIC COLORED LENSES WITH WHITE LETTERING

For Models S3, 4 &amp; 7

†6061-BA	Blue Lens, with "CROSS & AMBULANCE" 5 11/8" Diam.....	2.30
†6061-RHP	Red Lens, with "HIGHWAY PATROL" 5 11/8" Diam.....	2.30
†6061-RP	Red Lens, with "POLICE", 5 11/8" Diam.....	2.30
†6061-RS	Red Lens, with "SHERIFF", 5 11/8" Diam.....	2.30
<b>For Deluxe &amp; Super 6 1/2" Models</b>		
†6065-RP	Red Lens, with "POLICE", 6 1/4" Diam.....	2.30
†6065-RS	Red Lens, with "SHERIFF", 6 1/4" Diam.....	2.30

## FLASHER UNITS

9017	Flasher Unit, 6 Volt, 5 Amp. cap. for 50 C.P. or 30-35 W. bulbs.....	1.75
9017-A	Flasher Unit, 12 Volt, 5 Amp. cap. for 50 C.P. or 30-35 W. bulbs.....	1.75

PARTS LIST CONTINUED ON PAGE 4

## SWITCHES

Part No.	Description	List Price	Part No.	Description	List Price
†4053-BU	Switch for Back-Up Light	1.38	†7020	Pivot	.58
†4053-W	Switch for No. 3 Universal Warning Light	1.38	7102-B	Angle Bracket	2.90
†4753	Automatic Switch for Back-up Lt.	2.00	†7221	Pivot Housing	1.15
†7053	Toggle Switch for Deck Light	1.05	7352	Radio Shielded Cable—90"	1.00
†9053	Switch for Single Lamp	1.04	†9002-A	Bracket Arm—3 1/8" Height—2 7/8" between hole centers	.58
†9553	Switch, Fused 3-Pole, for Pair Lamps	1.38	†9002-P1	"D" Bracket Arm	1.38
			†9002-S	Bracket Arm—1 3/4" Height—2" between hole centers	.58
†4002	Bracket Arm	1.38	††9003	Bottom Bracket Clamp	.29
†4002-A	Reinforcing Plate	.17	†9003-A	Bottom Bracket Clamp with 1/2" opening for thick bars (Pairs with Part No. 9500-A)	.29
†4002-P	Bracket Washer	.46	††9004	Bracket Cup Washer	.17
†4002-S	Bracket Arm	1.38	††9005-D	Drilled Cap Screw—7/8-14 x 1"	.40
†4002-S1	Bracket Washer	.46	††9006	Carriage Bolt, 7/8" USS x 4"	.16
†4002-S2	Bracket Washer	.46	††9006-B	Carriage Bolt, 7/8" USS x 6"	.20
†4006	Cap Screw, Hex Head, 1/4" USS x 3/4"	.06	††9006-L	Carriage Bolt, 7/8" USS x 1 3/4"	.08
†4067	Ring Assembly, Incl. 9471-2	1.38	††9006-P	Cap Screw, 7/8" USS x 1 3/4"	.08
4068	Shell Assembly	4.14	††9006-S	Cap Screw, 7/8" USS x 2"	.08
††4075	Adapter Ring, Incl. Ground Wire and No. 9683 Terminal	1.50	††9007	Hex Nut, 7/8" USS	.06
†4167	HI Ring Assembly, incl. #4195 Ornament	1.70	††9007-C	Hex Nut, 1/4" USS	.04
†4175	HI Adapter Ring	.70	††9009-D	Special Flat Washer, 7/8" I. D.	.04
†4201	Outside Bracket Washer	.50	††9010	Rubber Grommet	.07
††4206	Drilled Carriage Bolt, 7/8" USS x 1 3/4"	.50	†9052	Wire Assembly	.69
††4209	Bracket Washer	.40	†9052-C	Wire Assy.—B-U Lights	1.50
††4210	Rubber Cap	.20	††9071-2	Ring Screw & Nut, 8-32 x 7/8"	.14
††4215	Bracket Gasket	.20	††9082	Wire Clamp	.35
4252-F	Seine Twine Cable, 6'	.50	††9083	Open end terminal	.14
4268	Shell Assembly	3.00	††9084	Round hole terminal	.14
†4269	Inside Bracket Washer	.50	††9090	Clamp Extension Bushing	.23
†4567	HI Ring, less ornament	1.38	††9091	Rubber Grommet for "B" Bracket	.21
4701	Outside Bracket Washer	.60	†9169	Reflector	2.07
†4709	Bracket Washer	.40	††9382	"Y" Connector	.23
4715	Rubber Washer	.10	†9444	Bulb Socket, for pre-focused bulbs	.58
††4741	Machine Screw, 6-32 x 7/8" Binder head	.06	†9467	Ring Assembly Incl. Part 9471-2	1.38
†4767	Ring Assy., Incl. #4795	.80	9468	Shell Assembly	4.14
4768	Shell Assembly	2.50	9468-U	Shell Assembly	6.00
†4769	Washer Reflector	.50	††9471-2	Ring Screw & Nut, 8-32 x 7/8"	.14
††4798	Adapter Spring	.06	††9500	Upper Bracket Clamp	.29
††6295	Shell ornament, complete with Unity name plate	.92	†9500-A	Upper Bracket Clamp with 1/2" opening for thick Bars (Pairs with Part No. 9003-A)	.29
††6296	Shell ornament attaching screw	.06	††9509	Lock Washer 7/8"	.03
††6441	Screw, 4-36 x 7/8" Oval Head	.06	††9571-2	Ring Screw & Nut 10-32 x 3/4"	.14
††6471	HI Ring Screw	.06	††9582	Bakelite Connector	.17
††6498	Adapter Spring	.06	††9604	Bracket Washer	.35
7002	3 1/4" Round Bracket	2.90	††9604-A	Bracket Washer	.35
7002-A1	2" Square Bracket	2.90	9668-C	Shell Assy. for Warning Light	6.90
7002-A2	Clamp Bracket	2.90	9668-D	Shell Assy. for AG Deck Light	7.75
7015	Rubber Gasket	.20	†9675	Adapter Locating Ring, including Ground Wire and No. 9683 Terminal	1.50
			††9683	Glaseal Bulb Terminal	.17

UNITY MANUFACTURING CO., 2909 Indiana Ave., CHICAGO 16, ILL.