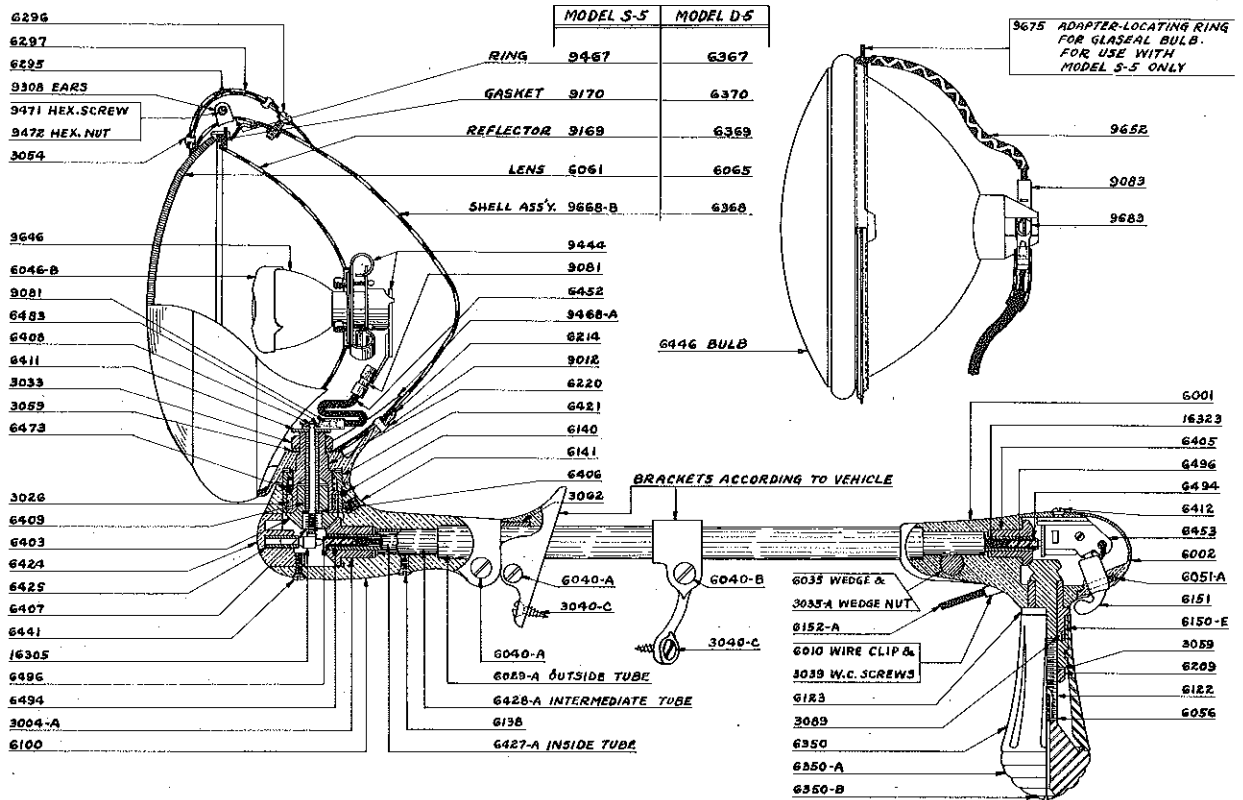
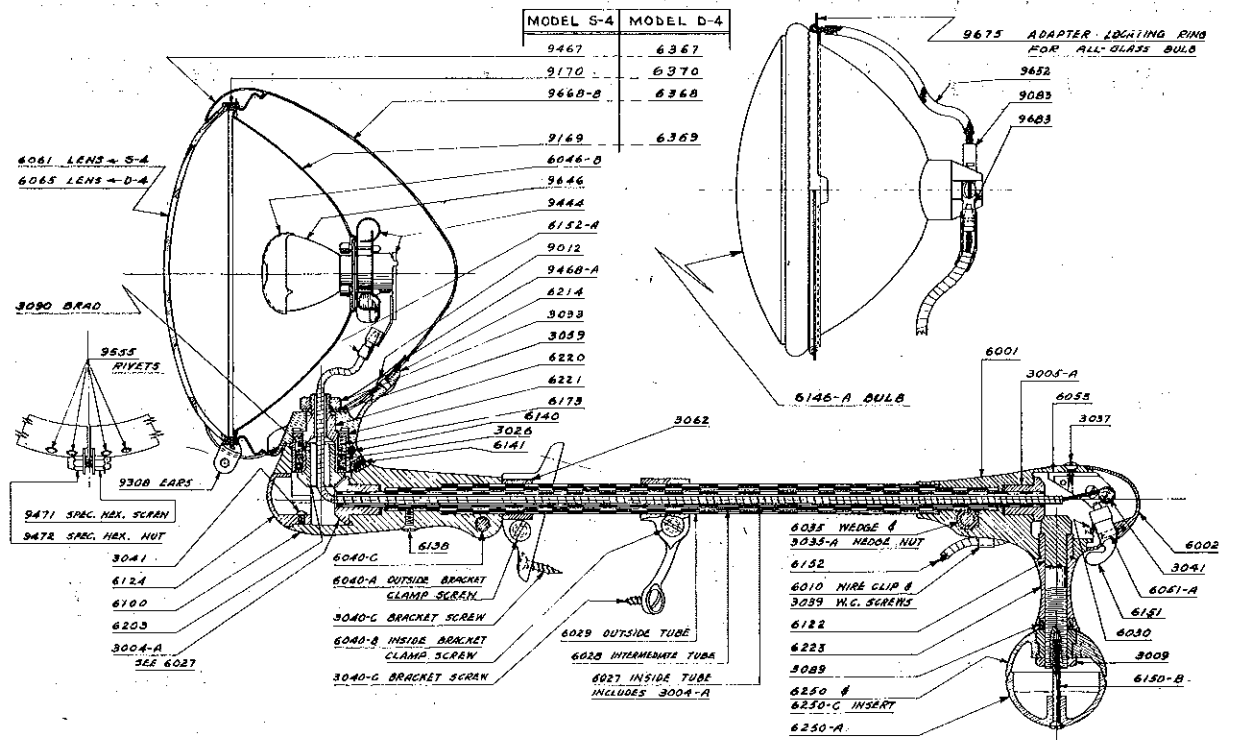


# Model S-5 (No. 100 and 150) and D-5 (No. 200 and 250) Safetylight



SEE PAGES 3 and 4 FOR PRICES AND DESCRIPTIONS OF PARTS

## Model S-4 and D-4 Safetylight—1939 to 1944

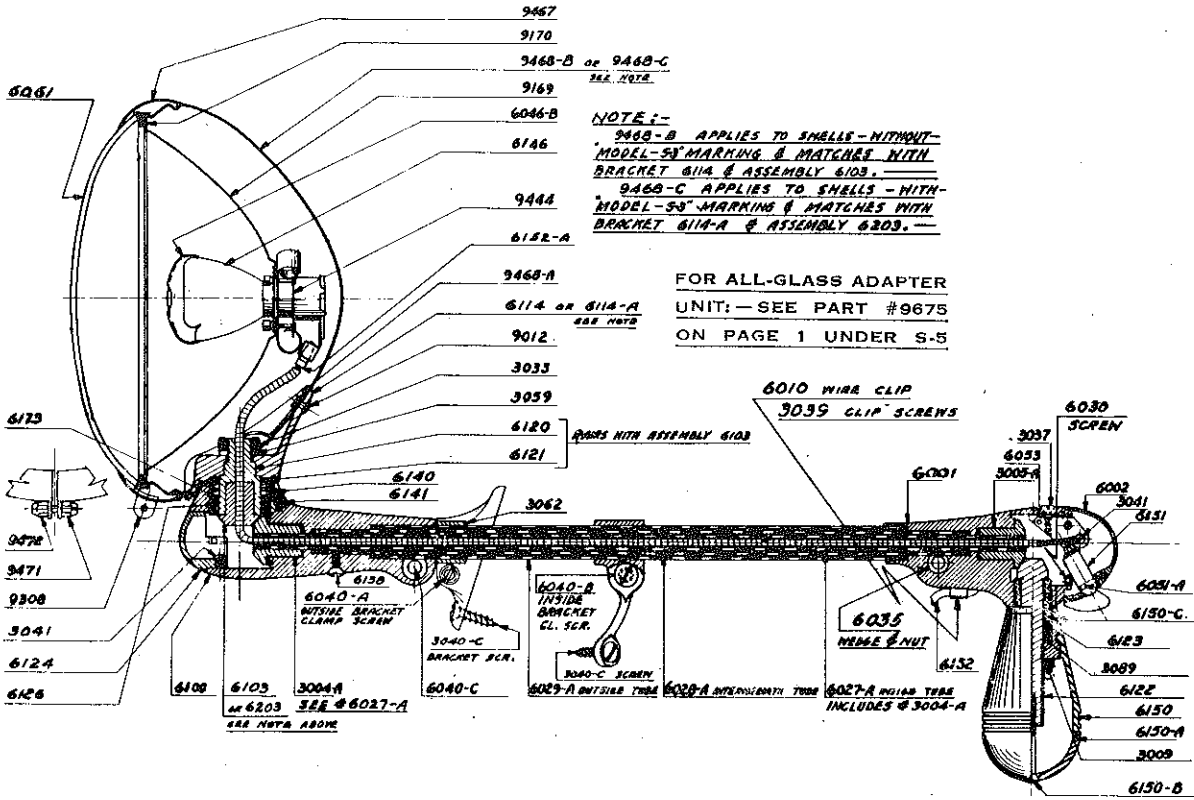


See New Handle and Shell Ornament Above on S-5

SEE PAGES 3 and 4 FOR PRICES AND DESCRIPTIONS OF PARTS

**UNITY MANUFACTURING CO., 2909 Indiana Ave., CHICAGO 16, ILL.**

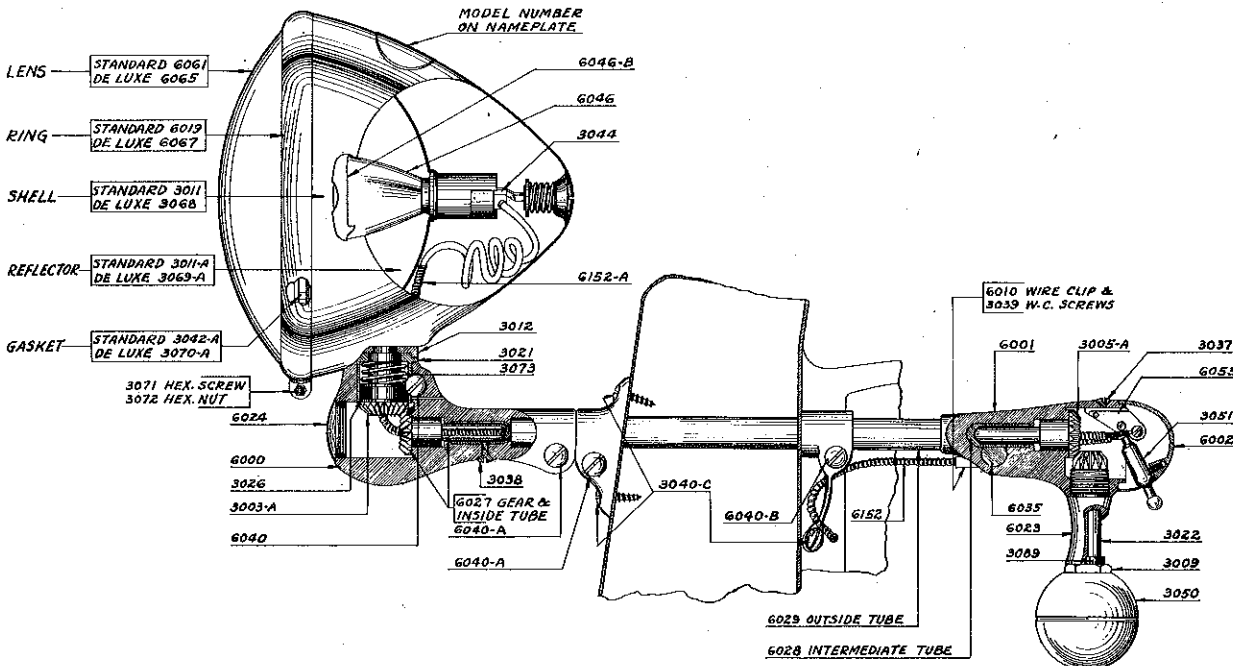
# Model S-3 Safetylight-1939 to 1944



See New Handle and Shell Ornament on Page 1 on S-5

SEE PAGES 3 and 4 FOR PRICES AND DESCRIPTIONS OF PARTS

# Model S-1, S-2 and D-1 Safetylight-1934 to 1939



SEE PAGES 3 and 4 FOR PRICES AND DESCRIPTIONS OF PARTS

Illustrations of all Unity Spotlights built since 1934 appear on Pages 1 and 2. Repair parts for Unity Spotlights built prior to 1934 are no longer available, except lenses and gaskets, which appear below at beginning of Parts Lists.

†—One Dagger before Parts Number indicates that such part is packed and labeled ONE TO A CARTON.

††—Two Daggers before Parts Number indicates that such part is packed and labeled in STANDARD PACKAGE OF TEN PIECES. Where less than ten of such parts are ordered, they are packed in marked paper bags.

Parts with no daggers before them are either individually wrapped or packed in marked paper bag.

N. B.—On Jobber orders for Parts Only, totalling less than \$3.00 wholesale, a Service Charge of 25¢ will be added.

**PARTS PRICES (U.S.A.) PLEASE ORDER BY PART NUMBER**

PRICES SUBJECT TO CHANGE WITHOUT NOTICE

Following are gaskets and lenses for pre-1934 Model

**SPORTLIGHTS**

Part No.	Description	List	Part No.	Description	List
††3042	Synthetic Rubber Gasket, Std. Sportlight and Models S and S-1, 1/8" thick.	.20	†3048-RP	Clear Ruby Lens with "POLICE" on inside face—for Jr. Sportlite.	3.00
††3047	Synthetic Rubber Gasket, Jr. Sportlight and Models J and J-1, 1/8" thick.	.20	†3061	Lens for Std. Sportlite—5 3/4" O.D.	.40
††3070	Synthetic Rubber Gasket, Deluxe Sportlite and Models D and D-1, 3/4" thick.	.20	†3061-R	Clear Ruby Lens for Std. Sportlite.	1.75
†3048	Lens for Jr. Sportlite, 5 1/2" O.D.	.40	†3061-RP	Clear Ruby Lens with "POLICE" on inside face—for Std. Sportlite.	3.00
			†3065	Lens for Deluxe Sportlite—6 1/4" O.D.	.40
			†6048	Lens for Model J and J-1—5 13/32" O.D.	.40
			†6048-R	Clear Red Lens for Model J and J-1 Light.	1.75

Following are parts for 1934 and later model

**SAFETYLIGHTS**

Part No.	Description	List	Part No.	Description	List
††3003-A	Shoulder Post Gear Ass'y—18 teeth.	.60	††6022-A	Handle Shaft & Pinion—1 7/8" overall.	.60
††3005-A	Gear with stop—18 teeth.	.25	††6023	Handle Sleeve and Bushing.	.30
††3009	Handle Lock Nut.	.15	6023-A	Handle Sleeve and Bushing—3/4" overall.	.30
3011-A	Substitute Parts Nos. 9169, 9444 and 9646.	..	††6024	Lamp Housing Plug.	.25
3012	Washer.	.35	††6027	Inside Tube and Gear—12 1/4" overall, 9/32" O.D. tube and 18 tooth gear.	1.00
3021	Shoulder Bushing.	.50	††*6027-A	Inside Tube and Gear—11 1/2" overall, 9/32" O.D. tube and 18 tooth gear.	1.00
††3026	Felt Washer.	.05	††*6027-B	Inside Tube and Gear—9 3/4" overall, 9/32" O.D. tube and 18 tooth gear.	1.00
††3033	Nut for Shoulder Post.	.10	†*6027-D	Inside tube and gear—10 5/16" overall, 9/32" O.D. tube and 18 tooth gear.	1.00
††3037	Screw to Switch.	.01 net	†*6028	Intermediate Tubing—10 5/8" overall.	.50
††3038	Intermediate Tube Lock Screw.	.01 net	†*6028-A	Substitute Part No. 6428-A.	..
††3039	Wire Clip Screws.	.01 net	†*6028-B	Substitute Part No. 6428B.	..
††3040-C	P.K. Sheet Metal Bracket Screw.	.05	†*6028-D	Intermediate Tubing—8 11/16" overall.	.50
††3041	Switch Contact Screw and Housing Plug Screw.	.05	†*6029	Outside Tubing—8 5/8" overall.	.90
3044	Bulb Socket.	.30	†*6029-A	Outside Tubing—7 7/8" overall.	.90
3050	Handle Ball—1 Piece.	.75	†*6029-B	Outside Tubing—6 1/8" overall.	.90
††3051	Switch toggle only.	.30	†*6029-D	Outside Tubing—6 11/16" overall.	.90
††3059	Lock Washer for Shoulder Bushing.	.01 net	†6030	Screw for Cap.	.01 net
3062	Shaft Sleeve for Bracket.	.10	††6035	Handle Wedge and Nut.	.15
3069	Substitute Parts Nos. 6369, 9444 and 9646.	..	††6040	Horizontal Friction Screw.	.06
††3071-2	Ring Screw and Nut, 6-32 x 9/16".	.10	††6040-A	Outside Bracket Clamp Screw—1 1/16" long.	.06
††3073	Shoulder Spring.	.05	††6040-B	Inside Bracket Clamp Screw—3/8" long.	.06
††3089	Felt Washer.	.05	6040-C	Substitute No. 6040-A.	..
†6000	Lamp Housing Casting.	2.00	6046	6-8 volt—32 c.p. Bulb No. 1133.	.19 net
††6001	Handle Housing Casting.	2.00	6046-A	6-8 volt—50 c.p. Bulb No. 1183.	.27 net
††6002	Switch Cap Assembly, including Part Nos. 6051-A, 6151 & 2-6030.	.90	††6046-B	Bulb Shield.	.15
††6010	Wire Clip.	.01 net	6046-C	12-16 volt—32 c.p. Bulb No. 1143.	.30 net
†6013	Ring for J and J-1 light incl. #3071-2.	.90			
†6019	Ring for S and S-1 light incl. #3071-2.	1.00			
††6022	Substitute Part No. 6122.	..			

PARTS LIST CONTINUED ON PAGE 4

\* If other length tubes are desired—add \$1.00 list per tube and specify overall length wanted.

PARTS PRICES (U.S.A.) PLEASE ORDER BY PART NUMBER  
PRICES SUBJECT TO CHANGE WITHOUT NOTICE

## SAFETYLIGHTS—Continued

Part No.	Description	List	Part No.	Description	List
6046-D	12-16 volt—50 c.p. Bulb No. 1195...	.45 net	†6367	Ring for D-4 and D-5 Light, incl. #9471-2.	1.10
††6051-A	Toggle Screw only	.01 net	6368	Shell Assembly for D-4 and D-5 Light	3.00
††6053	Switch Assembly	.40	6368-U	Shell Assembly for D-4 and D-5 (#250) Utility Light	3.00
†6061	Lens for S-1-2-3-4-5 Lights, 5 $\frac{13}{16}$ " diam.	.40	6369	Reflector for D-4 and D-5 Light	1.50
†6061-A	Clear Amber Lens, 5 $\frac{13}{16}$ " diameter	1.10	††6370	Synthetic Rubber Gasket for D-4, and D-5 Light, $\frac{3}{16}$ " thick	.20
†6061-BA	Blue Lens, with "CROSS" and "AMBULANCE" in White	1.75	††6403	Head Post—Gear Assy., incl. Nos. 3026, 6220, 6403, 6406 and 6409	1.20
†6061-F	Clear Ruby Lens, with "FIRE" in White	1.75	††6405	Gear, Handle End Inside Tube	.25
†6061-R	Clear Ruby Lens, 5 $\frac{13}{16}$ " diameter	1.75	6406	Insulator—See No. 6403	.01 net
†6061-RP	Clear Ruby Lens with "POLICE" on inside face—5 $\frac{13}{16}$ "	3.00	††6407	Spring, Contact Brush	.10
†6061-RS	Clear Ruby Lens with "SHERIFF" on inside face—5 $\frac{13}{16}$ "	3.00	††6408	Contact Brush	.10
†6061-RHP	Clear Ruby Lens with "HIGHWAY PATROL" on inside face—5 $\frac{13}{16}$ " diameter	3.00	6409	Insulator—See No. 6403	.10
†6061-RPS	Clear Ruby Lens, with "POLICE STOP" on inside face—5 $\frac{13}{16}$ " diameter	3.00	††6411	Insulator, Terminal and Head Post	.01 net
†6065	Lens for D, D-1, D-4, D-5 Lights, 6 $\frac{1}{4}$ " diameter	.40	††6412	Screw to Switch	.50
†6065-A	Clear Amber Lens, 6 $\frac{1}{4}$ " diameter	1.10	††6421	Bushing, Head Post	.50
†6065-R	Clear Ruby Lens, 6 $\frac{1}{4}$ " diameter	1.75	††6424	Plug, Head Housing, incl. Parts 6425 and 16305	.50
†6065-RP	Clear Ruby Lens, with "POLICE" on inside face—6 $\frac{1}{4}$ "	3.00	6425	Insulator—See No. 6424	1.40
†6065-RS	Clear Ruby Lens with "SHERIFF" on inside face—6 $\frac{1}{4}$ "	3.00	†6427-A	Inside Tube, incl. Parts 3004-A, 2-6494, 2-6496, and 16323, 11 $\frac{13}{16}$ " overall	1.40
†6067	Ring for D and D-1 Light, incl. #3071-2.	1.10	6427-B	Inside Tube and Gear, incl. Parts 3004-A, 2-6494, 2-6496, and 16323, overall 9 $\frac{3}{4}$ " for S-5, D-5 Utility Lights	1.40
6091	Fuse Holder, complete with 14 Amp. Fuse	.25	†6428-A	Intermediate Tube—9 $\frac{7}{8}$ " overall	.60
†6100	Lamp Housing Casting	2.00	†6428-B	Intermediate Tube—8 $\frac{1}{8}$ " overall	.60
††6103	Shoulder Post Assembly, including 3003-A, 18 tooth gear, 6120 and 6126	.80	††6441	Screw, Plug—4.36 x $\frac{5}{16}$ " oval head	.01 net
6120	Shoulder Post—See 6103	.50	††6452	Wire, Contact to Bulb, incl. 2-9081	.10
††6121	Shoulder Bushing	.60	††6473	Head Post Spring	.10
††6122	Handle Shaft and Pinion Gear—12 teeth—tapped end	.30	††6483	Special Terminal	.10
††6123	Handle Sleeve and Bushing	.25	6494	Insulator—See No. 6427	.35 net
††6124	Lamp Housing Plug	.01 net	6496	Contact Brush—See No. 6427	.45 net
††6138	Intermediate Tube Lock Screw	.01 net	9146-A	6-8 volt, 50 c.p. Bulb, Mazda 1503	.55 net
††6140	Wedge Pin	.15	9146-C	12-16 volt, 32 c.p. Bulb, Mazda 1327	.55 net
††6141	Vertical Friction Set Screw	.10	9146-D	12-16 volt, 50 c.p. Bulb, Mazda 1507	1.50
6141-W	Wrench for Set Screw, #6141	.25	9169	Reflector for S-3, S-4 and S-5 Light	1.50
6146	Substitute Part No. 9646	.30	††9170	Synthetic Rubber Gasket—S-3, S-4, and S-5, $\frac{3}{16}$ " thick	.20
6146-A	Glaseal 6-volt Spotlight Bulb, Mazda #4524	2.25	††9444	Bulb Socket	.40
6146-E	32-volt, 50 c.p. Bulb, prefocussed base	1.10 net	†9467	Ring for Model S-4 and S-5, inc. 9471-2	1.00
6146-G	18-24 volt, 50 c.p. Bulb, prefocussed base	.95 net	9468-B	Shell Assem., incl. 6114 and 9468-A	3.00
†6150	Upper Section Handle and Insert 6150-C	.50	9468-C	Shell Assem., incl. 6114-A and 9468-A	3.00
††6150-A	Lower Section Handle	.25	††9471-2	Ring Screw and Nut, 8-32 x $\frac{7}{16}$ "	.10
††6150-B	Handle Screw	.05	9646	6-8 volt, 32 c.p. Bulb, Mazda 1209	.27 net
††6151	Switch Toggle only	.30	9668-B	Shell Assembly, Model S-4 and S-5, including Parts Nos. 6214 and 9468-A	3.00
†6152	Outside Wire	.35	9668-BU	Shell Assembly for S-4 and S-5 (#150) Utility Light	3.00
†6152-A	Inside Wire	.35	†9675	Adaptor Locating Ring, including Ground Wire #9652 and Terminals No. 9083 and Two No. 9683	.50
†6152-B	Inside Wire for Utility Spotlight	.05	††9683	Glaseal Bulb Terminal	.10
††6173	Shoulder Spring	.80	All Brackets, except No. 100-7	1.75 Set	
††6203	Shoulder Post Assem., incl. 3003-A, 18 tooth gear, 6220 and 3026	.50	Outside Bracket	1.00	
6220	Head Post—See No. 6203 or 6403	.50	Inside Bracket	.75	
††6221	Shoulder Bushing	.50	Open Car Brackets	1.75	
6223	Substitute Part No. 6023	.50	Bracket No. 100-7—Roof Mounting	3.00 Set	
†6250	Upper Section Ball Handle and Insert 6150-C	.50	Bracket Locating Fixture and Pointer	1.50 net	
††6250-A	Lower Section Ball Handle	.25	Special $\frac{1}{8}$ " Twist Drill Bit—10" Long	4.25 net	
††6295	Shell Ornament, complete with Unity Name Plate	.70	Resilvering Reflector	1.00 net	
††6296	Shell Ornament Attaching Screw	.05	<b>SUB-ASSEMBLIES</b>		
†6350	Upper Section of Handle and Insert #6350-C	.50	Handle Housing Assembly, complete with Switch, Pinion, Sleeve and Handle (Order by Handle Housing Number, e.g., #6001 Handle Housing Assembly)		4.50
††6350-A	Lower Section of Handle	.25	Head Housing Assembly, includes Shell Assembly, Reflector, Bulb, Socket, Gasket, Lens and Ring—order by Model:		
††6350-B	Handle Screw	.05	Model S3, S4, S5		7.00
			Model D4, D5		9.00

On Jobber orders for Parts Only, totaling less than \$3.00 wholesale, a service charge of 25¢ will be added.