

UNITY "DECK" LIGHTS

FOR BOATS, FIRE TRUCKS, TOW TRUCKS

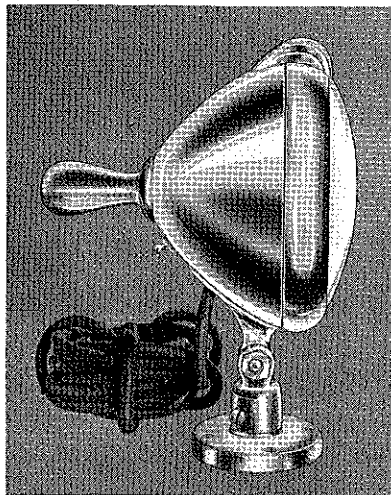
7/4" Diameter, built entirely of brass, chromium plated, over copper and nickel,—im-pervious to climatic conditions or salt water.

Equipped with:— Special spun parabolic reflector; 50 C.P. Bulb; Ten feet heavy water-proof, rubber-covered, two-wire cable; Switch in head at finger tip reach of control handle.

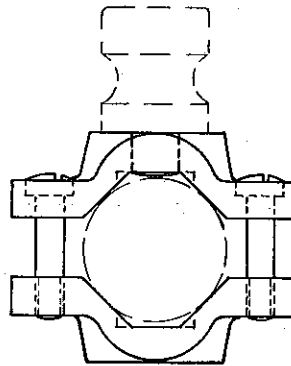
Can be turned instantly in any direction, up, down or to either side.

The double swivel connection between bracket and Lamp head can be set at any desired friction adjustment, or drawn up to lock light in permanent position. This connection is leak-proof and freeze-proof.

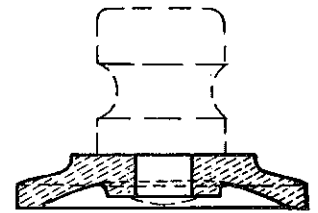
Will project beam one-quarter mile to a mile, depending on offsetting light conditions.



MODEL "A"



"CLAMP BRACKET"



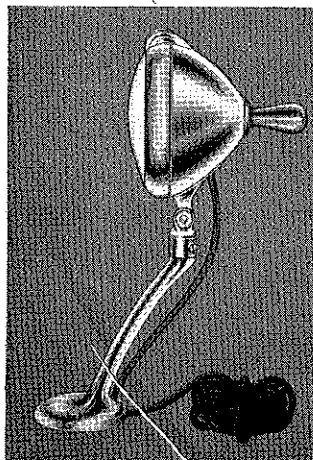
"SQUARE BRACKET"

The "Clamp" type bracket (fits up to 1 1/4" standard) and "Square" (2") Bracket shown above are available for use with Model "A" Deck Lamps.

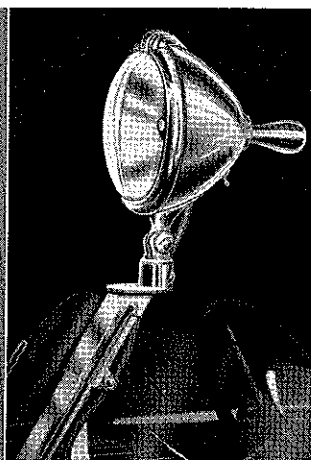
Where desired, instead of the round bracket, specify:

Model "A" with "Clamp" Bracket — or

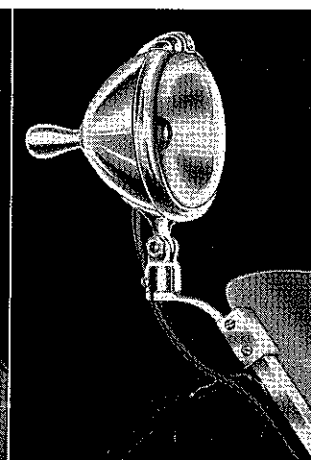
Model "A" with "Square" Bracket.



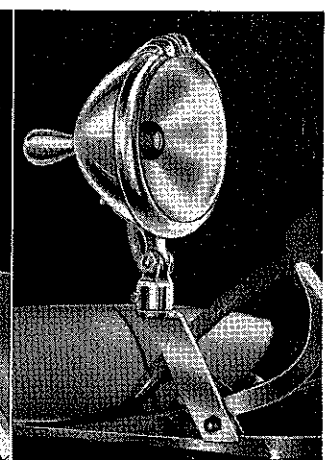
MODEL "B"
for
UNIVERSAL USE



MODEL "C"
for
CHRIS-CRAFT
Models 1, 2, 3, 17



MODEL "D"
for
CHRIS-CRAFT
Models 23 to 30 incl.



MODEL "E"
for
CHRIS-CRAFT
Models 18 to 22 incl.

UNITY DECK LIGHTS

No. 900-A — Model "A".....	
No. 900-B — Model "B".....	
No. 900-C — Model "C".....	
No. 900-D — Model "D".....	
No. 900-E — Model "E".....	

6 or 12 VOLT

\$10.00
12.50
12.50
12.50
12.50

32 VOLT

\$11.75
14.25
14.25
14.25
14.25

Unless Otherwise Specified—Furnished in 6 Volt—Shipping Weight, 8 lbs.

ALMOST THREE MILLION UNITY LIGHTS IN USE

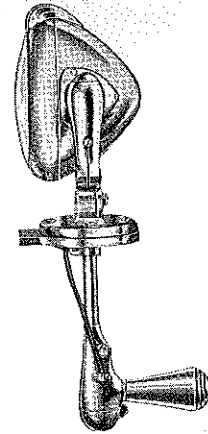
Unity "Utility" Safetylight

This is the famous "SAFETYLIGHT" built for mounting in roof of cabins.

Through inside rocking-rotating control of handle, beam can be instantly turned to any point in a sphere—the most positive, yet simplest, fastest and easiest operating inside control light available.

Equipped with 50 C.P. Bulb.

Full chromium plated, waterproof, not affected by salt air or water.



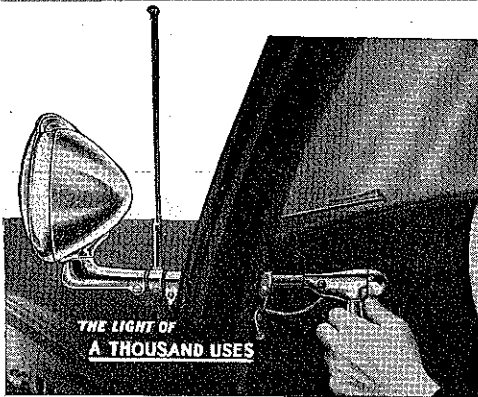
"Utility" Safetylight

UNITY "UTILITY" SAFETYLIGHT

	6 or 12 VOLT	32 VOLT
No. 150 - "UTILITY" Safetylight, Standard Model, 6"; Complete.....	\$14.00	\$15.75
No. 250 - "UTILITY" Safetylight, De Luxe Model, 6½"; Complete.....	16.50	18.25

Unless otherwise Specified—Furnished in 6 Volt

Unity "Marine" Safetylight



For finest radio reception, use the Unity Spotlight Aerial illustrated above. For details, see Unity Catalog Form No. 129.

The light approved, recommended and sold by practically all automobile factories—because electrically and mechanically best.

For *Cabin Corner Post Mounting*.

Full chromium plated, waterproof, not affected by salt air or water.

Equipped with 50 C.P. Bulb.

Furnished for left hand installation unless otherwise specified. For right hand installation, order "RIGHT HAND" MARINE MODEL.

UNITY "MARINE" SAFETYLIGHT

	6 or 12 VOLT	32 VOLT
No. 100-M - Standard 6" Marine Safetylight, complete with brackets	\$12.50	\$14.25
No. 200-M - De Luxe 6½" Marine Safetylight, complete with brackets	15.00	16.75

Unless otherwise Specified—Furnished in 6 Volt

Equip your boats with **UNITY BOAT LIGHTS** — the lights that give you **MORE LIGHT PER DOLLAR** than any other lights.

UNITY MANUFACTURING CO., 2909 Indiana Ave., Chicago, Ill.

The Searchlight Specialists
WORLD'S LARGEST BUILDERS OF SEARCHLIGHTS

(OVER)